

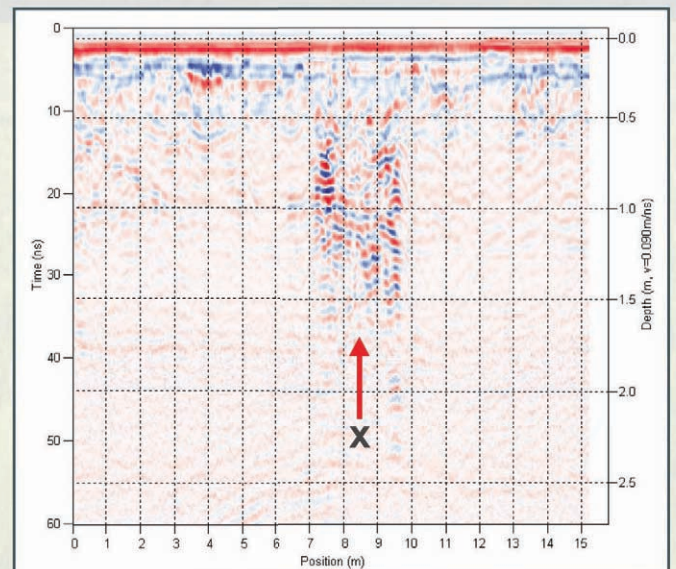
PPG and LDF related work

Proactive compliance with Heritage and Environmental site constraints increases the chance of planning permission being granted on brownfield and greenfield development sites. The most cost-effective way to scan a site for potential liability is using rapid and non-intrusive geophysical survey.

The archaeological potential of a site can be assessed in this manner, and environmental hazards such as buried fuel tanks, tar pits, and landfill leachate plumes can also be pinpointed for further investigation.

Arrow Geophysics carried out a geophysical survey in advance of a planning application to extend a churchyard car park for improved disabled access. Three survey targets within the development footprint were excavated to reveal vault debris and/or human remains, enabling the project design to be modified at minimal cost.

A strong response is visible at position X on the ground penetrating radar data





The shovel test pit at position X reveals a collapsed burial vault containing disarticulated human remains

Project file

Time on site: 1 day

Reporting turnaround: 11 days

Survey cost: £2,800

Geophysical technique(s) employed: ground penetrating radar

About us

Arrow Geophysics is a leading supplier of non-intrusive site surveys to both developers and regulators. Using a range of geophysical techniques we identify comprehensive information about the subsurface to reduce the risk of unexpected delays during key stages of site development.

Because of our approach of working with the client from the earliest opportunity, we would be delighted if you made contact with us to discuss your particular project requirements. Our approach can and does save time and money, and we now service the needs of clients operating on five continents.

Telephone: +44 (0)1323 645 199 Facsimile: +44 (0)1323 414 314

survey@arrowgeophysics.co.uk www.arrowgeophysics.co.uk