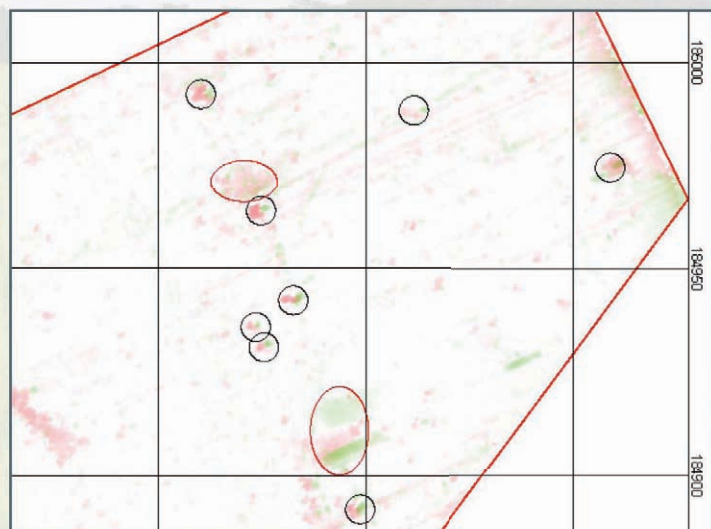


Contaminated land evaluation

Following the completion of a desk study and site walkover, it is often pragmatic to commission a geophysical survey over areas of known or suspected environmental contamination. Intrusive groundwork samples a tiny fraction of the concealed subsurface and provides potential exposure to a range of hazardous materials. In contrast, a geophysical survey can provide detailed coverage of an entire site in a matter of hours or days, and is completely non-intrusive.

Arrow Geophysics surveyed a six-hectare site in north London at one metre line spacing for a major environmental consultancy on behalf of the UK Ministry of Defence. The aim of the survey was to locate unexploded ordnance, civil defence waste pits and air raid shelters. A total of 34 targets was handed to the client. These were independently investigated and made safe as necessary.



Arrow Geophysics employs a proprietary data presentation technique to highlight and discriminate between different categories of survey target



Project file

Time on site: 7 days

Reporting turnaround: 12 days

Survey cost: £14,600

Geophysical technique(s) employed: electromagnetic survey and magnetic gradiometry

About us

Arrow Geophysics is a leading supplier of non-intrusive site surveys to both developers and regulators. Using a range of geophysical techniques we identify comprehensive information about the subsurface to reduce the risk of unexpected delays during key stages of site development.

Because of our approach of working with the client from the earliest opportunity, we would be delighted if you made contact with us to discuss your particular project requirements. Our approach can and does save time and money, and we now service the needs of clients operating on five continents.

Telephone: +44 (0)1323 645 199 Facsimile: +44 (0)1323 414 314

survey@arrowgeophysics.co.uk www.arrowgeophysics.co.uk