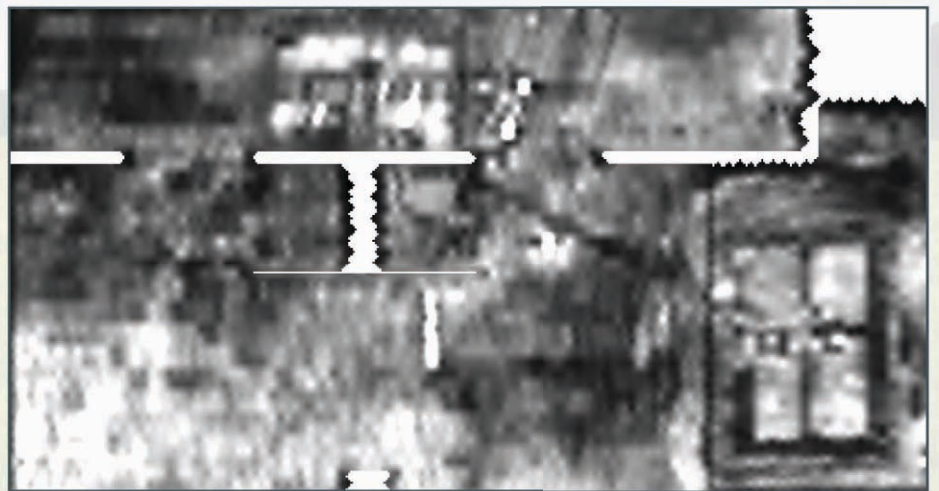


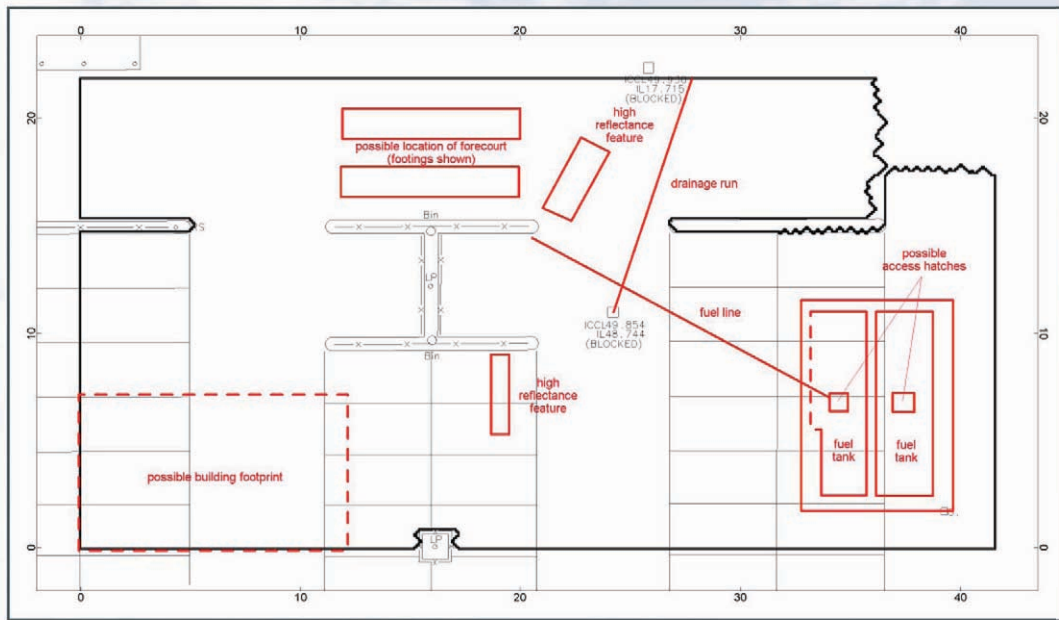
Brownfield site investigation

Geophysical surveys can rapidly provide detailed information about buried hazards on brownfield sites. Traditional site investigation relies on point measurement or borehole analysis, each of which sample a tiny proportion of the subsurface. Non-intrusive geophysical methods enable large sites to be comprehensively sampled, enabling accurate targeting of more costly intrusive work.

A superstore in the West Midlands required a shade awning to be constructed over a 75m x 50m area of customer parking. Because of the site's historic use as a filling station, Arrow Geophysics was commissioned to carry out a geophysical site investigation to map buried fuel tanks and any associated infrastructure within the proposed development footprint.



Depth slice showing radar reflections from
200-600 mm below ground level



CAD-based interpretation of the geophysical survey results

Project file

Time on site: 1 day

Reporting turnaround: 7 days

Survey cost: £3,500

Geophysical technique(s) employed: ground penetrating radar

About us

Arrow Geophysics is a leading supplier of non-intrusive site surveys to both developers and regulators. Using a range of geophysical techniques we identify comprehensive information about the subsurface to reduce the risk of unexpected delays during key stages of site development.

Because of our approach of working with the client from the earliest opportunity, we would be delighted if you made contact with us to discuss your particular project requirements. Our approach can and does save time and money, and we now service the needs of clients operating on five continents.

Telephone: +44 (0)1323 645 199 Facsimile: +44 (0)1323 414 314

survey@arrowgeophysics.co.uk www.arrowgeophysics.co.uk